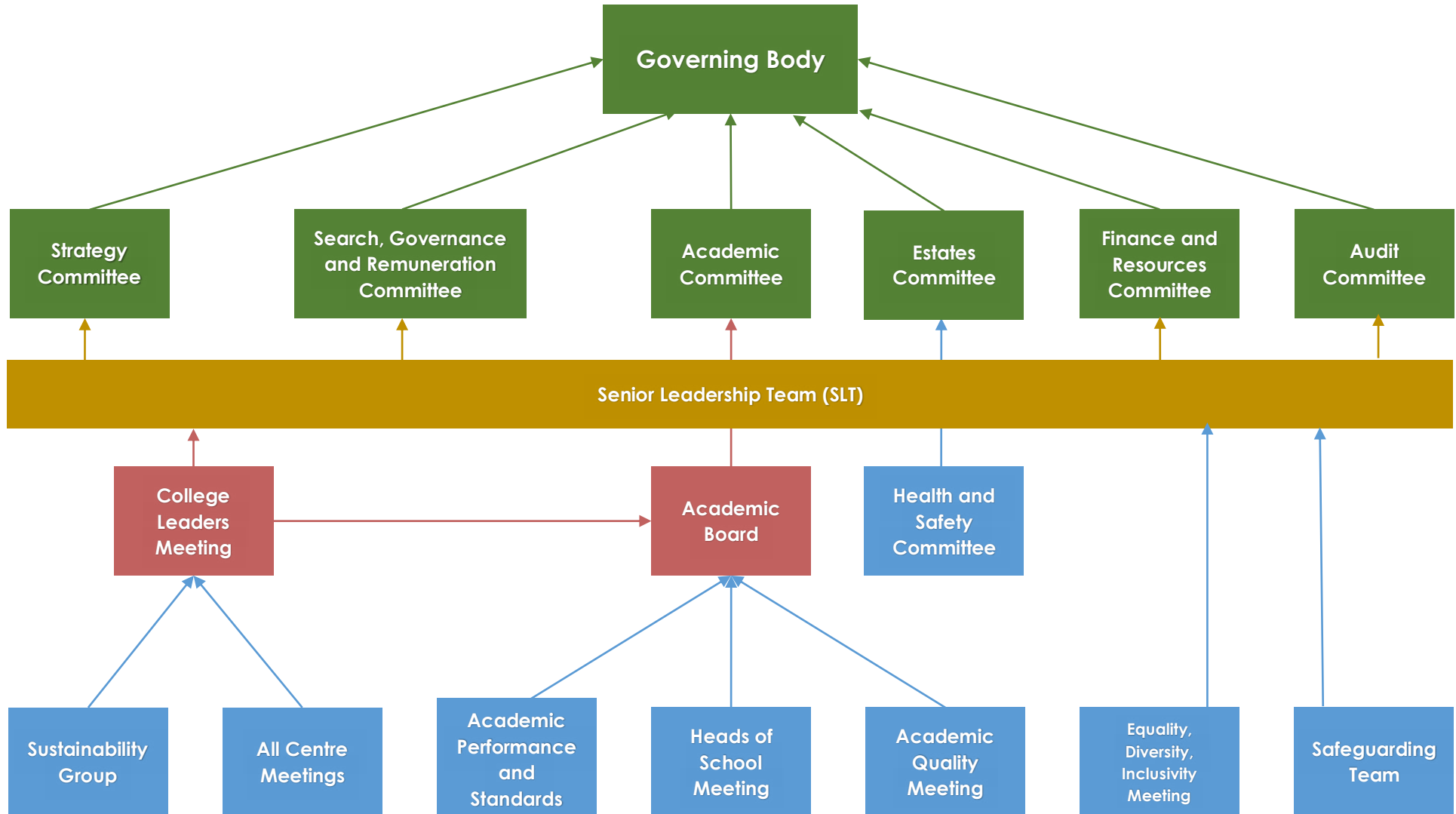


## Governing Body Committee Structure



### BRIEF OF COMMITTEE MEETINGS

| Meeting   | Topics  | Meetings per year<br>Timing                                 | Chair                |
|---|---|---|----------------------|
| <b>Full Governing Body (GB)</b>                 | Overview of all Committees' minutes and recommendations   | 3<br>Tue-Thur<br>1600-2000 (includes tour/training session) | Roger McClure        |
| <b>Strategy (ST)</b>                            | Strategic direction and planning  | 2<br>Annual Away Day<br>Governors and<br>Autumn meeting     | Heather Barrett-Mold |
| <b>Audit (AU)</b>                               | Internal control, risk management, control issues, internal and external audits   | 3<br>Mon or Thur<br>0830-1000                               | Robert Howard        |
| <b>Estates (ES)</b>                             | Leases, capital projects, land and buildings, facilities<br><br>Accidents, incidents, risk assessment, Major Incident Plan  | 3<br>Mon-Wed<br>1000-1200                                   | Ralph Luck           |
| <b>Academic (AC)</b>                            | Academic recruitment, quality, curriculum, self-assessment  | 3<br>Mon-Wed<br>1000-1200                                   | Heather Barrett-Mold |
| <b>Search, Governance and Remuneration (SG)</b> | Governor appointments, memberships, new sub-committees, induction and appraisal, review Standing Orders, Instrument and Articles, Statement of Governance, Remuneration | 3<br>Tue-Wed<br>1500-1630                                   | Roger McClure        |
| <b>Finance and Resources (FR)</b>               | Financial planning and strategic management   | 3<br>Tue-Wed<br>1700-1900<br>(follows SG)                   | Peter Doble          |